

POLYFLAX

- Structured polyester fabric with a distinctively natural linen-look
- Standard 100 by Oeko-Tex® certified, free from harmful substances
- Washable up to 72°

APPLICATIONS



FABRIC PROPERTIES

	Transparent
	Polyester
	100 g/m ²
	0.47 mm
	325 cm
	330 cm

FEATURES / TECHNICAL PROPERTIES

	5
	Flame retardant
	Applicable in humid areas
	Suitable for Wave
	Oeko-Tex
	Special colours from 120 m

WASHING INSTRUCTIONS



FIRE PROTECTION

Class 1 (EN 13773)
 Class 1 (UNI 8456)
 Type B (BS 5867-2)



Polyflax
OPTICAL AND SOLAR COEFFICIENTS ($\pm 5\%$, DIN EN 410)

Colour	T_V	T_S	R_S	A_S	T_{UV}	F_C	g_{tot}
100	59.9	58.7	37.4	3.9	34.9	0.73	0.52
120	54.2	56.0	36.5	7.5	46.9	0.73	0.53
160	39.7	48.8	30.5	20.7	38.6	0.76	0.55
220	53.1	56.0	35.9	8.1	48.0	0.73	0.53
240	44.7	51.5	33.5	15.0	43.4	0.75	0.54
740	35.2	47.5	25.8	26.7	39.1	0.79	0.57
760	31.8	46.1	24.9	29.0	37.9	0.80	0.57
940	28.7	39.3	30.9	29.8	26.3	0.75	0.54

 T_V Visible light transmission

 R_S Solar reflectance

 T_{UV} UV transmission

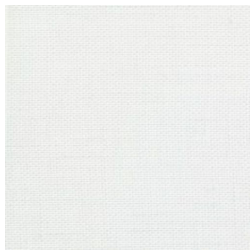
 g_{tot} Total g-value

 T_S Solar transmission

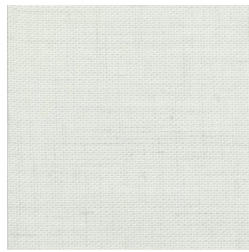
 A_S Solar absorption

 F_C Shading factor

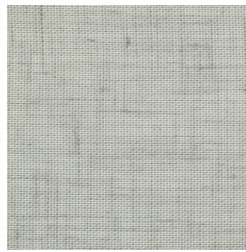
 $F_C + g_{tot}$: Value calculated with glass: 0.72 / $U_g = 1.6 \text{ W/m}^2 \text{ K}$, DIN EN 13363-1

Polyflax


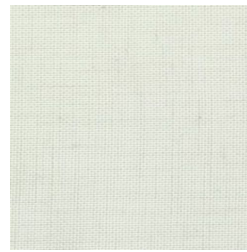
100



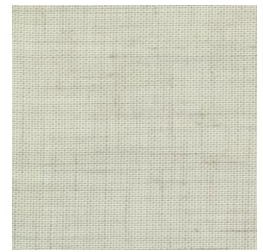
120



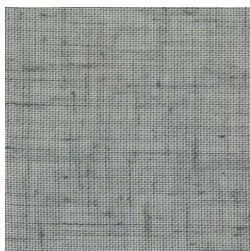
160



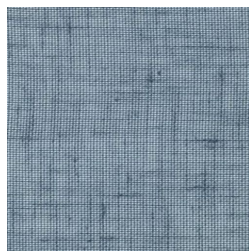
220



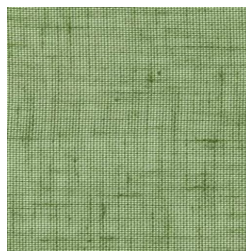
240



740



760



940

Colours shown are not binding